



Medium Chess Puzzle # 0100

By

G Bud Games
<https://gbud.in>

January 9, 2022

Contents

Medium Chess puzzle # 0100 - Mate in 2 moves	3
Medium chess puzzle 0100	3
Solution to medium chess puzzle 0100	4
Solution 1	4
Right moves for the solution to the medium chess puzzle 0100	6
Explanation for the moves	6
Categories of medium chess puzzle 0100	7
medium chess puzzle 0100 chart	8
How to view the solution to medium chess puzzle 0100	10
How to get help for moves in the medium chess puzzle 0100 . .	11
Play chess for free	12

List of Figures

1	Solve this medium chess puzzle 0100. Mate in 2 moves @ https://gbud.in/g8s5k82	3
2	Solve this medium chess puzzle online with solution @ https://gbud.in/g8s5k82	3
3	Initial board position of medium chess puzzle 0100	4
4	Nh3+	5
5	Kh1	5
6	fxg2#	6
7	medium chess puzzle 100 chart 1	8
8	medium chess puzzle 100 chart 2	9
9	medium chess puzzle 100 chart 3	9
10	medium chess puzzle 100 chart 4	10
11	Click the solution button to view solutions @ https://gbud.in/g8s5k82	10
12	Click the help button to get help on next move @ https://gbud.in/g8s5k82	11
13	Solve more medium puzzles @ https://gbud.in/chsmdpz	11
14	Solve other puzzles @ https://gbud.in/chsgppz	11
15	Play chess online for free. Solve puzzles and play with friends	12
16	Solve this puzzle online by scanning this QR code or go to the link below	13

Medium Chess puzzle # 0100 - Mate in 2 moves

Solve this medium chess puzzle and improve your chess games through improvement of your chess strategies and chess tactics.

Puzzle No : 0100

Difficulty level : medium

Description : Mate in 2 moves

Next Move : Black

Player level : Intermediate

Short URL for puzzle : <https://gbud.in/g8s5k82>

Medium chess puzzle 0100

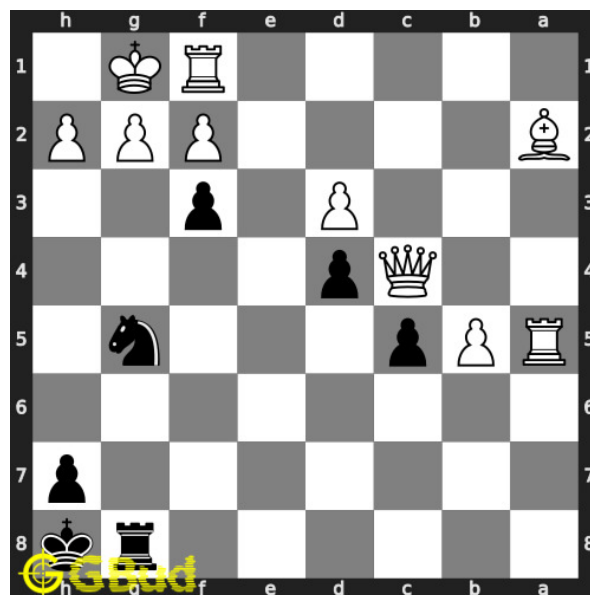


Figure 1: Solve this medium chess puzzle 0100. Mate in 2 moves @ <https://gbud.in/g8s5k82>



Figure 2: Solve this medium chess puzzle online with solution @ <https://gbud.in/g8s5k82>

Dont forget to check out [chess puzzles](#), [easy chess puzzles](#), [medium chess puzzles](#), [hard chess puzzles](#) and [chess puzzles collections](#) .

Solution to medium chess puzzle 0100

At this puzzle, next [move](#) is by [Black](#). The objective of the puzzle is to mate in 2 moves.

See the interactive solution at the [puzzle page](#)

Solution 1

Initial board position This is the initial board position of medium chess puzzle 0100.

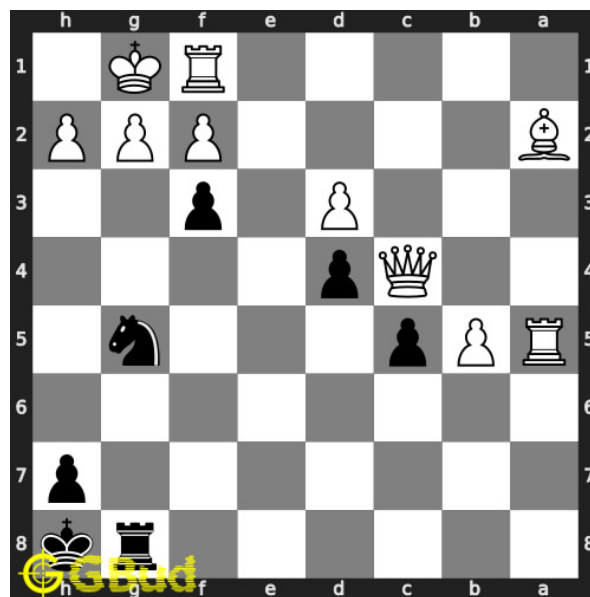


Figure 3: Initial board position of medium chess puzzle 0100

Move 1 Move by black

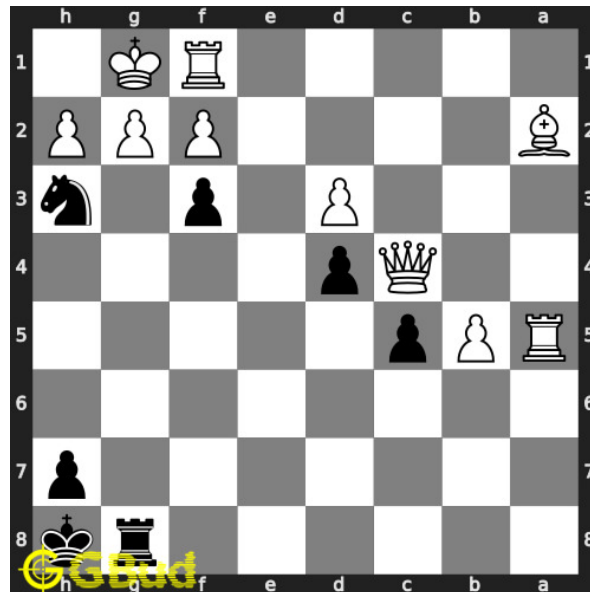


Figure 4: Nh3+

your **knight moves** to h3 and gives **check** to opponent. this is a two purpose **move**. one is the **check**. this **move** also opens the g **file** for your **rook**. opponent will have a **checkmate** using their **battery** of **queen** and **bishop**, if you give a chance

Move 2 Move by white

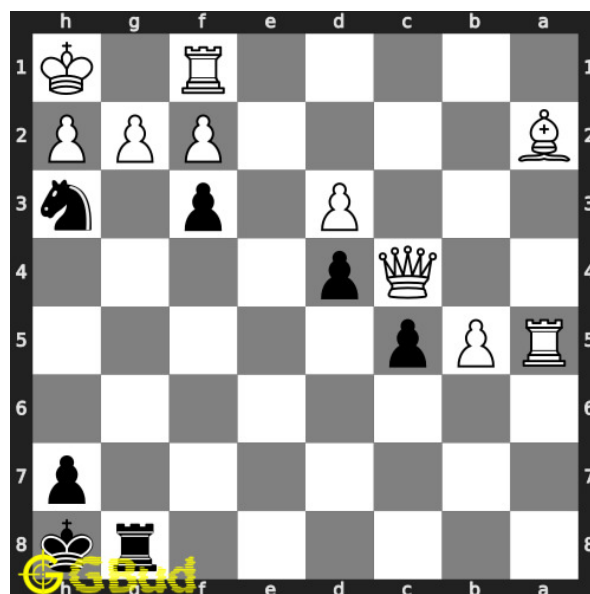


Figure 5: Kh1

opponent's **king moves** to h1 as this is the only legal **move** available. they can't **capture** your **knight** using the **pawn** since it is **pinned** to their **king**

Move 3 Move by black

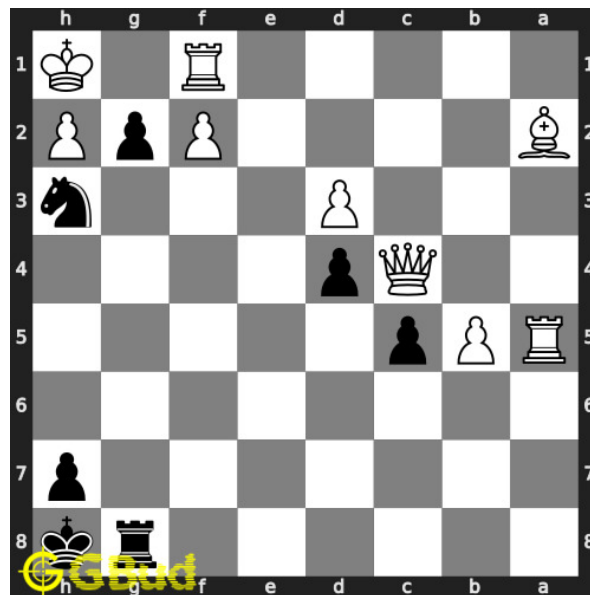


Figure 6: fxg2#

your **pawn captures** opponent's **pawn** and **checkmate**.. this is how you can **mate** in 2 **moves**. this is called david and goliath **mate**

Right moves for the solution to the medium chess puzzle 0100

Based on the objective of the puzzle, you have to make the right moves. Following are the right moves

1. Nh3+, fxg2#

Explanation for the moves

1. Nh3+ - Your knight moves to h3 and gives check to opponent. This is a two purpose move. One is the check. This move also opens the g file for your rook. Opponent will have a checkmate using their battery of queen and bishop, if you give a chance
2. Kh1 - Opponent's king moves to h1 as this is the only legal move available. They can't capture your knight using the pawn since it is pinned to their king
3. fxg2# - Your pawn captures opponent's pawn and checkmate.. This is how you can mate in 2 moves. This is called David and Goliath mate

4. For right move - You know the power of the pawn and knight. Keep up the good work
5. For wrong move - You could have had a David and Goliath mate after moving the knight. Try again

Categories of medium chess puzzle 0100

This medium chess puzzle falls in these categories.

1. [Medium chess puzzles](#)
2. [Mate in 2 puzzles in chess](#)
3. [Endgame puzzles in chess](#)
4. [Strategy puzzles in chess](#)
5. [Mate pattern puzzles in chess](#)
6. [Pin puzzles in chess](#)
7. [Pawn puzzles in chess](#)
8. [Knight puzzles in chess](#)

medium chess puzzle 0100 chart



Figure 7: medium chess puzzle 100 chart 1



Figure 8: medium chess puzzle 100 chart 2



Figure 9: medium chess puzzle 100 chart 3



Figure 10: medium chess puzzle 100 chart 4

How to view the solution to medium chess puzzle 0100

To view the [solution to this puzzle](https://gbud.in/g8s5k82), follow the steps given below

1. Go to the [puzzle page](https://gbud.in/g8s5k82)
2. Click the solution button (Key as shown [below](https://gbud.in/g8s5k82)) to view the solution



Figure 11: Click the solution button to view solutions @ <https://gbud.in/g8s5k82>

How to get help for moves in the medium chess puzzle 0100

To get help or the possible next moves in the puzzle, , follow the steps given below

1. Go to the [puzzle page](#)
2. Click the help button (exclamation mark as shown [below](#)) to get help or suggestion on next possible [move](#)



Figure 12: Click the help button to get help on next move @ <https://gbud.in/g8s5k82>



Figure 13: [Solve more medium puzzles @ https://gbud.in/chsmdpz](https://gbud.in/chsmdpz)



Figure 14: [Solve other puzzles @ https://gbud.in/chsgppz](https://gbud.in/chsgppz)

Play chess for free

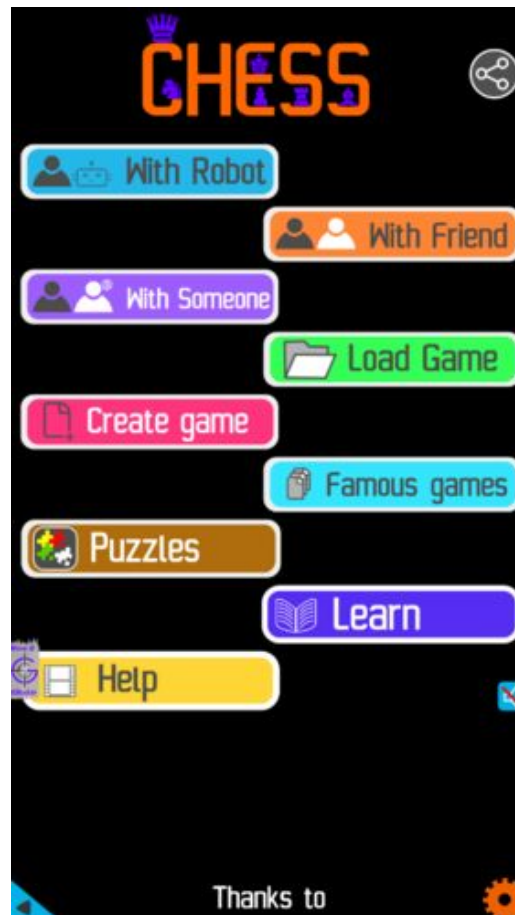


Figure 15: Play chess online for free. Solve puzzles and play with friends

Play chess for free at <https://gbud.in/chs>

We present you a platform to play chess online with friends for free. No need to install any app. You can play chess for free without registration or login.

Simple. You can do several chess related activities.

1. [solve chess puzzles](#)
2. [learn about chess](#)
3. [play chess with computer](#)
4. [play chess with friend](#)
5. [create your own chess games](#)

6. [fen viewer](#)
7. [fen editor](#)
8. [fen generator](#)
9. [pgn viewer](#)
10. [chess board editor](#)
11. [view famous chess games.](#)



Figure 16: Solve this puzzle online by scanning this QR code or go to the link below

<https://gbud.in/g8s5k82>

Read the latest article on Medium Chess puzzle # 0100 - Mate in 2 moves by scanning this QR code or click the link

Previous article : « [Medium Chess puzzle # 0099 - Mate in 2 moves](#)

Next article : [Medium chess puzzles](#) »

[Back to top](#)

[Contact Us](#)